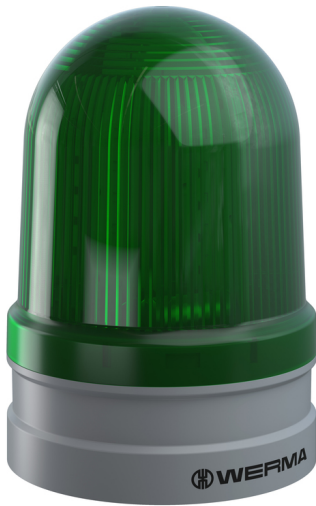


Maxi free-standing Beacons / EvoSIGNAL
Maxi Rotating 12/24VAC/DC GN



Part No.:	262.240.70
Series:	EvoSIGNAL Maxi



MECHANICAL DATA	
Height	173 mm
Diameter	120 mm
Materials	PC PC/ABS
Dome colour	Green
Housing colour	Grey
Protection category	IP66
Connection	Push-in terminal
cross-sectional area minimum	0,25mm ² / 24AWG
cross-sectional area maximum	1,50mm ² / 16AWG
Working temperature minimum	-30°C
Working temperature maximum	+60°C
Weight with packaging	538 g
Product weight	438 g

ELECTRICAL DATA	
Operating voltage	12V 24V
Operating voltage type	AC/DC
Operating voltage frequency	50Hz
Operating voltage tolerance	+/- 10%
Rated operational voltage	24 VDC
Rated operational current	550 mA
Rated inrush current	<1800 mA
Protection class	Protection class 2
Pollution degree	3
Overvoltage category	III

OPTICAL DATA	
Light source	LED
Light colour	Green
Optical signal image	Revolving
Service life optical	50,000 h minimum
Rotation speed (rpm)	180 U/min
Pulse- & pause Duration [ms]	55ON, 278OFF

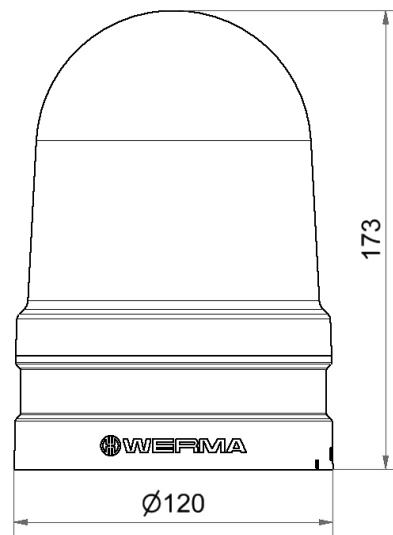
APPROVAL DATA	
Conforms with CE	Yes
WEEE	Yes
Conform with ATEX-directive	No

! For additional installation and mounting information, refer to the appropriate user guide at www.werma.com. This printed copy is for information only and is subject to alteration.

Maxi free-standing Beacons / EvoSIGNAL
Maxi Rotating 12/24VAC/DC GN

Conforms with CCC	No
Conforms with UL	cULus
UL Type Rating	Type 12
Conforms with FCC	No
Conforms with IC	No
EAC certificate available	Yes
Conforms with UKCA (Importer)	Yes (WERMA (UK) Ltd.)
Conforms with AS-I	No
ICAO Certification	No
Conforms with GL	No
Conforms with RoHS CN	No
Conforms with VdS	No

DRAWING



For additional installation and mounting information, refer to the appropriate user guide at www.werma.com. This printed copy is for information only and is subject to alteration.