

Distributor - SAC-ASI-J-Y-B-PUR-2,0-FS SCO - 1407576


Please be informed that the data shown in this PDF Document is generated from our Online Catalog. Please find the complete data in the user's documentation. Our General Terms of Use for Downloads are valid (<http://phoenixcontact.com/download>)



AS-Interface distributor with a high degree of protection, for a branch from two flat-ribbon conductors to a 2.0 m PUR round cable with straight M12-SPEEDCON socket



Key Commercial Data

| | |
|--------------|---|
| Packing unit | 1 pc |
| GTIN |  4 046356 779968 |
| GTIN | 4046356779968 |

Technical data

Dimensions

| | |
|-----------------|-----|
| Length of cable | 2 m |
|-----------------|-----|

Ambient conditions

| | |
|---|---|
| Degree of protection | IP65 |
| | IP67 |
| Ambient temperature (operation) | -25 °C ... 75 °C |
| | -25 °C ... 80 °C (Cable, flexible installation) |
| | -40 °C ... 80 °C (cable, fixed installation) |
| Ambient temperature (storage/transport) | -25 °C ... 85 °C |

General data

| | |
|-----------------------|-------------------------------|
| Rated current at 40°C | 4 A |
| Rated voltage | ≤ 32 V DC |
| Number of positions | 4 |
| Standards/regulations | M12 connector IEC 61076-2-101 |
| Overvoltage category | II |
| Degree of pollution | 3 |
| Connection method | AS-i penetration technique |

Distributor - SAC-ASI-J-Y-B-PUR-2,0-FS SCO - 1407576

Technical data

Characteristics head 1

| | |
|--|--|
| Head type | Load center lateral AS-i Screw locking |
| No. of positions (pin connector pattern) | 4 |
| Material (component) | CuSn (Contact) |
| | Ni/Au (Contact surface) |
| | PBT (Contact carriers) |
| | PBT (Housing) |
| | Stainless steel (Screw connection) |
| Torque | 1.65 Nm (Locking screw) |

Characteristics head 2

| | |
|--|---|
| Head type | Socket straight M12 SPEEDCON |
| No. of positions (pin connector pattern) | 4 (5) |
| Material (component) | CuSn (Contact) |
| | Ni/Au (Contact surface) |
| | TPU GF (Contact carriers) |
| | TPU (Grip) |
| | Zinc die-cast, nickel-plated (Screw connection) |
| Insertion/withdrawal cycles | ≥ 100 |
| Torque | 0.4 Nm |

Standards and Regulations

| | |
|--------------------------|-------------------------------|
| Standards/specifications | M12 connector IEC 61076-2-101 |
|--------------------------|-------------------------------|

Cable

| | |
|---|---------------------------------------|
| Cable type | PUR halogen-free black |
| Cable type (abbreviation) | PUR |
| UL AWM style | 20549 / 10493 |
| Conductor cross section | 4x 0.34 mm ² (Signal line) |
| AWG signal line | 22 |
| Conductor structure signal line | 42x 0.10 mm |
| Core diameter including insulation | 1.25 mm ±0.05 mm |
| Wire colors | brown, white, blue, black |
| Overall twist | 4 wires, twisted |
| External sheath, color | black |
| External cable diameter D | 4.3 mm ±0.2 mm |
| Outer sheath, material | PUR |
| Material conductor insulation | PP |
| Conductor material | Bare Cu litz wires |
| Ambient temperature (operation) | -40 °C ... 80 °C (fixed routing) |
| | -25 °C ... 80 °C (Flexibly installed) |
| Ambient temperature (storage/transport) | -40 °C ... 85 °C |
| Shielded | no |

Distributor - SAC-ASI-J-Y-B-PUR-2,0-FS SCO - 1407576

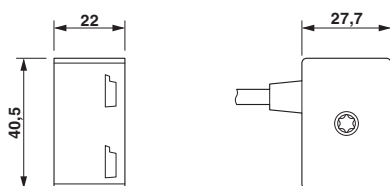
Technical data

Environmental Product Compliance

| | |
|------------|---|
| REACH SVHC | Lead 7439-92-1 |
| China RoHS | Environmentally Friendly Use Period = 50 years |
| | For details about hazardous substances go to tab "Downloads", Category "Manufacturer's declaration" |

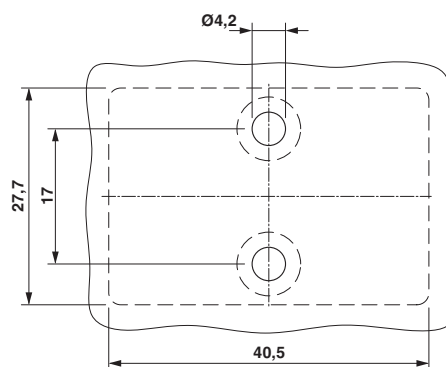
Drawings

Dimensional drawing



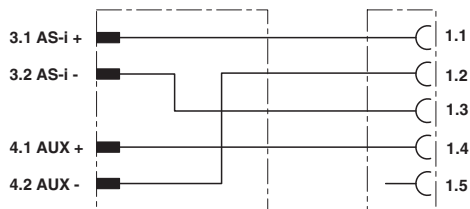
Distributor, AS-Interface

Dimensional drawing



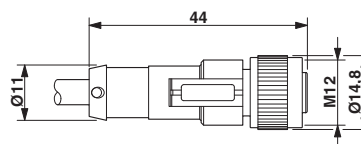
Distance and position of the mounting holes

Circuit diagram



Contact assignment of the AS-Interface distributor

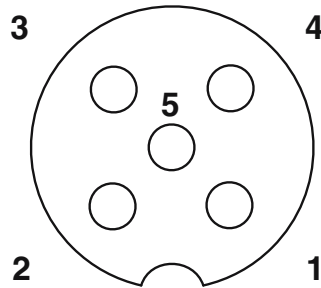
Dimensional drawing



M12 x 1 socket, straight

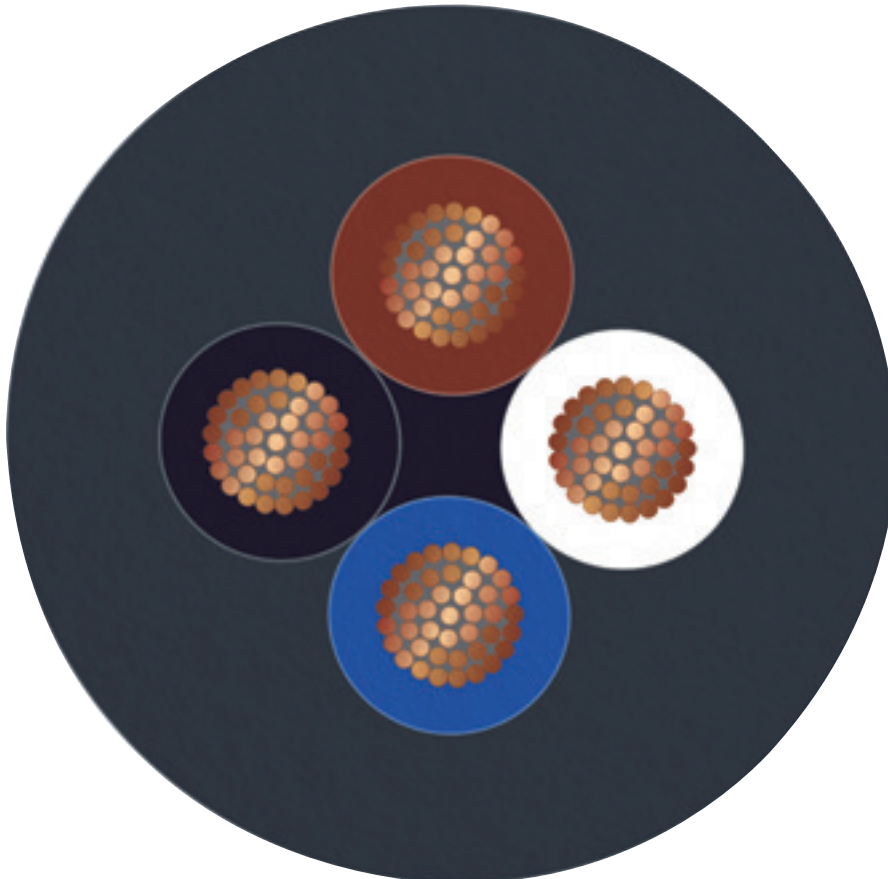
Distributor - SAC-ASI-J-Y-B-PUR-2,0-FS SCO - 1407576

Schematic diagram



Pin assignment M12, PIN 1: AS-i +, PIN 2: AUX -, PIN 3: AS-i -, PIN 4: AUX +, PIN 5: Not used

Cable cross section



PUR halogen-free black [PUR]

Classifications

eCl@ss

| | |
|---------------|----------|
| eCl@ss 10.0.1 | 27440106 |
|---------------|----------|

Distributor - SAC-ASI-J-Y-B-PUR-2,0-FS SCO - 1407576

Classifications

eCl@ss

| | |
|-------------|----------|
| eCl@ss 11.0 | 27440106 |
| eCl@ss 4.0 | 27060300 |
| eCl@ss 4.1 | 27060300 |
| eCl@ss 5.0 | 27061800 |
| eCl@ss 5.1 | 27061800 |
| eCl@ss 6.0 | 27279200 |
| eCl@ss 7.0 | 27279218 |
| eCl@ss 9.0 | 27440106 |

ETIM

| | |
|----------|----------|
| ETIM 3.0 | EC000516 |
| ETIM 4.0 | EC001855 |
| ETIM 6.0 | EC002925 |
| ETIM 7.0 | EC002925 |

UNSPSC

| | |
|---------------|----------|
| UNSPSC 6.01 | 31261501 |
| UNSPSC 7.0901 | 31261501 |
| UNSPSC 11 | 31261501 |
| UNSPSC 12.01 | 31261501 |
| UNSPSC 13.2 | 31251501 |
| UNSPSC 19.0 | 31251501 |
| UNSPSC 20.0 | 31251501 |
| UNSPSC 21.0 | 31251501 |

Approvals

Approvals

Approvals

EAC

Ex Approvals

Approval details

| | | |
|-----|--|--------------------------|
| EAC | | RU C- DE.BL08.B.00286 |
|-----|--|--------------------------|

Distributor - SAC-ASI-J-Y-B-PUR-2,0-FS SCO - 1407576

Accessories

Accessories

Plug for cable screw gland

Screw plug - PROT-MS SCO - 1553129



M12 screw plug with fast-locking system for unoccupied M12 female connectors of sensor/actuator cables, boxes, and flush-type connectors

Screwdriver tools

Screwdriver - SZK PH2 VDE - 1205163



Screwdriver, PH crosshead, VDE insulated, size: PH 2 x 100 mm, 2-component grip, with non-slip grip

Tool - SAC BIT M12-D15 - 1208432



Nut for assembling sensor/actuator cables with M12 connector and M12 connectors for assembly, with a knurl diameter of 15 mm, for 4 mm hexagonal drive

Torque tool

Torque screwdriver - TSD 04 SAC - 1208429



Torque screwdriver, with preset torque of 0.4 Nm and 4 mm hexagonal drive for M12 connectors

Phoenix Contact 2021 © - all rights reserved
<http://www.phoenixcontact.com>

PHOENIX CONTACT GmbH & Co. KG
Flachsmarktstr. 8
32825 Blomberg
Germany
Tel. +49 5235 300
Fax +49 5235 3 41200
<http://www.phoenixcontact.com>